

Poverty is not always apparent: In PEI, approximately 12% of the population lives in poverty.<sup>1</sup>

## 1 Screen Everyone

“Do you ever have difficulty making ends meet at the end of the month?”

(Sensitivity 98%, specificity 40% for living below the poverty line)<sup>2</sup>

## 2 Poverty is a Risk Factor

Consider:

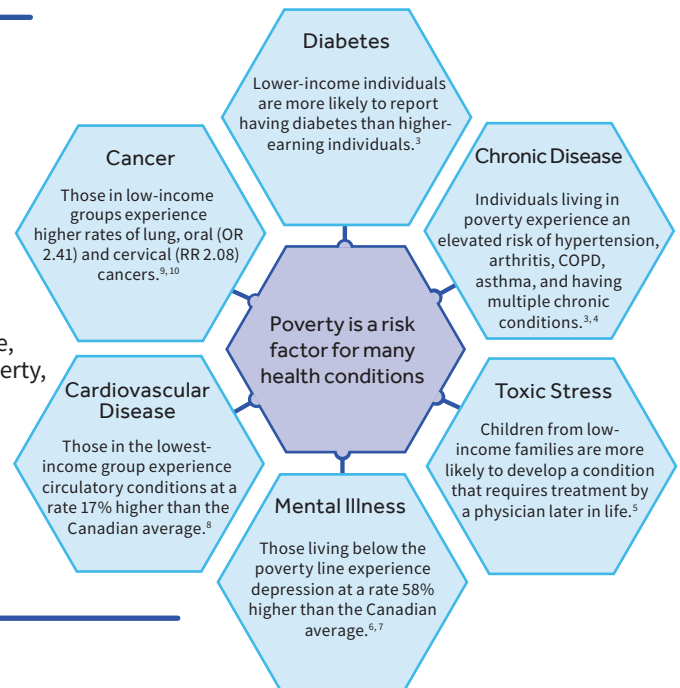
New immigrants, women, Indigenous peoples, and LGBTQ+ are among the highest risk groups.

Example 1:

If an otherwise healthy 35-year-old comes to your office, without risk factors for diabetes other than living in poverty, you consider ordering a screening test for diabetes.

Example 2:

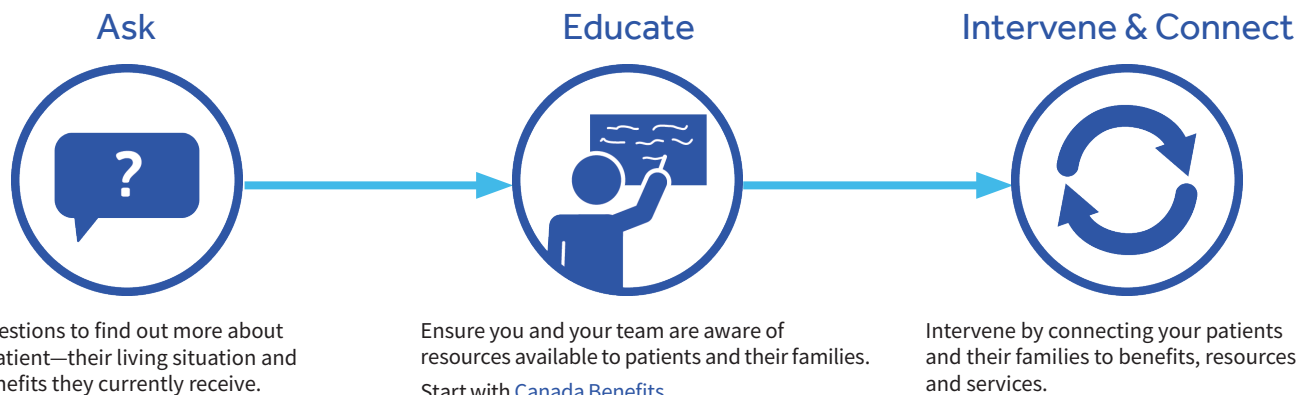
If an otherwise low-risk patient who lives in poverty presents with chest pain, this elevates the pre-test probability of a cardiac source and helps determine how aggressive you are in ordering investigations.



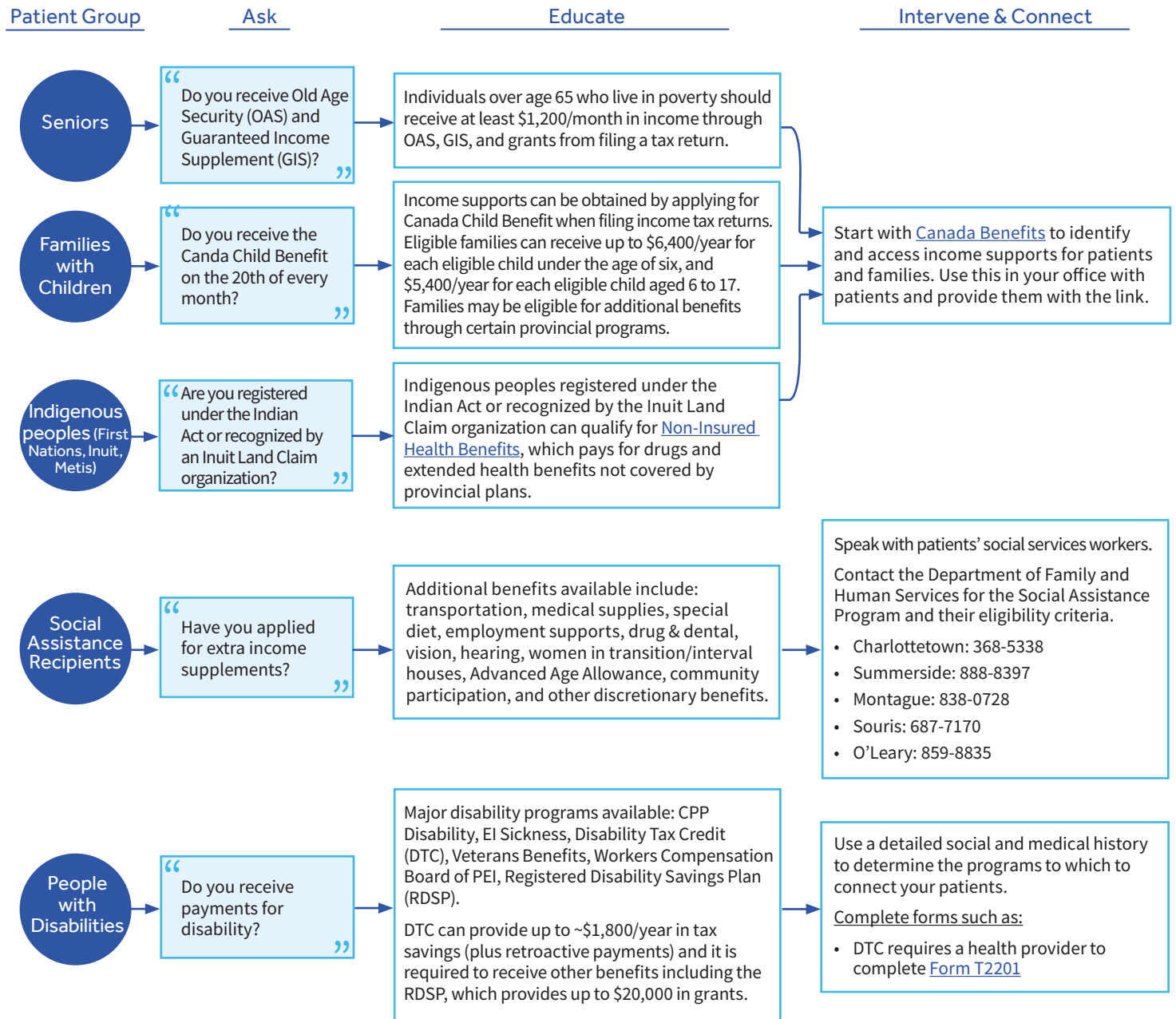
## 3 Intervene

Ask Everyone: “Have you filled out and sent in your tax forms?”

- Ask questions to find out more about your patient—their employment, living situation, social supports and the benefits they receive. Tax returns are required to access many income security benefits: e.g., GST / HST credits, Child Benefits, working income tax benefits, and property tax credits. Connect your patients to [Free Community Tax Clinics](#).
- Even people without official residency status can file returns.
- Drug Coverage: The patient must have up-to-date tax filings and must have a health card issued by the Province of Prince Edward Island. For more information on drug coverage programs available and their eligibility criteria, visit [healthpei.ca/pharmacare](http://healthpei.ca/pharmacare)



# Intervening can have a profound impact on your patients' health



## Key Resources

**Canada Benefits**  
([www.canadabenefits.gc.ca](http://www.canadabenefits.gc.ca))

Provides a full listing of federal and provincial income and other supports, organized by personal status (e.g., “parent,” “Indigenous peoples”) or life situation (e.g., “unemployment,” “health concerns”), with links to the relevant program websites and to application forms.

**Community Legal Information Association of PEI**  
([www.cliapei.ca](http://www.cliapei.ca))

A non-profit, charitable organization offering free law information products and services to the entire province.

**Remember:** As health care providers, it is our responsibility to provide complete and detailed information that accurately portrays our patients' health status and disabilities.  
It is **NOT** our role to serve as the gatekeepers for income security.

# Supporting Material\*

- [i] Free Community Tax Clinics: <https://link.cep.health/pov1>
- [ii] PEI Pharmacare: <https://link.cep.health/pov140>
- [iii] Canada Benefits: <https://link.cep.health/pov10>
- [v] Non-Insured Health Benefits for First Nations and Inuit: <https://link.cep.health/pov67>
- [vi] PovNet: <https://link.cep.health/pov141>
- [vii] Form T2201: <https://link.cep.health/pov6>
- [viii] Prince Edward Island's Department of Family and Human Services: <https://link.cep.health/pov142>
- [ix] Workers Compensation Board of PEI: <https://link.cep.health/pov143>
- [x] To see who is an eligible Non-Insured Health Benefits Client: <https://link.cep.health/pov5>
- [xi] About the Canada Child Benefit program: <https://link.cep.health/pov15>
- [xii] How to calculate your Canada Child Benefit: <https://link.cep.health/pov16>

\*These supporting materials are hosted by external organizations, and as such the accuracy and accessibility of their links are not guaranteed. CEP will make every effort to keep these links up to date.

## References

- [1] MacEwen A, Canadian Centre for Policy Alternatives. Cost of poverty in Prince Edward Island [Internet]. 2011 [cited 2016 Apr 22].  
\*Please note that the measure used to calculate this statistic is the Low Income Measure after tax.
- [2] Brcic V, Eberdt C, Kaczorowski J. Corrigendum to Development of a tool to identify poverty in a family practice setting: A pilot study. Int J Family Med [Internet]. 2015 Sep 21 [cited 2016 Apr 22]; 1-7. doi: 10.1155/2015/418125.
- [3] Canadian Diabetes Association Clinical Practice Guidelines Expert Committee. Canadian Diabetes Association 2013 clinical practice guidelines for the prevention and management of diabetes in Canada. Can J Diabetes. 2013; 37(suppl 1).
- [4] Dales RE, Choi B, Chen Y, Tang M. Influence of family income on hospital visits for asthma among Canadian school children. Thorax. 2002 Jun; 57(6): 513-7.
- [5] Chen E, Martin AD, Matthews KA. Trajectories of socioeconomic status across children's lifetime predict health. Pediatrics. 2007 Aug; 120(2): e297-303.
- [6] Fryers T, Melzer D, Jenkins R. Social inequalities and the common mental disorders: a systematic review of the evidence. Soc Psychiatry Psychiatr Epidemiol. 2003 May; 38(5): 229-237.
- [7] Smith KL, Matheson FI, Moineddin R, Glazier RH. Gender, income and immigration differences in depression in Canadian urban centres. Can J Public Health. 2007 Mar-Apr; 98(2): 149-153.
- [8] Lightman E, Mitchell A, Wilson B. Poverty is making us sick: a comprehensive survey of income and health in Canada [Internet]. Toronto: Wellesley Institute; 2008 Dec [cited 2015 Aug 29]; 1-38.
- [9] Conway DI, Petticrew M, Marlborough H, Berthiller J, Hashibe M, Macpherson LMD. Socioeconomic inequalities and oral cancer risk: a systematic review and meta-analysis of case-control studies. Int J Cancer. 2008; 122: 2811-2819.
- [10] Shack L, Jordan C, Thomson CS, Mak V, Møller H. Variation in incidence of breast, lung and cervical cancer and malignant melanoma of skin by socioeconomic group in England. BMC Cancer [Internet]. 26 Sep 2008 [cited 2015 Aug 29]; 1-10. doi: 10.1186/1471-2407-8-271.

This Tool has been modified from the Ontario version that was originally developed as part of the Knowledge Translation in Primary Care Initiative which is led by CEP with collaboration from the Ontario College of Family Physicians (OCFP) and the Nurse Practitioners' Association of Ontario (NPAO). Clinical leadership for the development of this tool was provided by Dr. Gary Bloch MD CCFP and was subject to external review by primary care providers and other relevant stakeholders. This modified Tool was funded by the College of Family Physicians of Canada. The Ontario version of this tool was adapted from the version created in 2013 by Dr. Gary Bloch MD CCFP, Ontario College of Family Physicians and its Poverty and Health Committee. This tool is an adaptation of the Ontario tool.

**This Tool was developed for licensed health care professionals in PEI as a guide only and does not constitute medical or other professional advice. Primary care providers and other health care professionals are required to exercise their own clinical judgment in using this Tool. Neither the Centre for Effective Practice ("CEP"), the College of Family Physicians of Canada (CFCP), the Prince Edward Island College of Family Physicians, nor any of their respective agents, appointees, directors, officers, employees, contractors, members or volunteers: (i) are providing medical, diagnostic or treatment services through this Tool; (ii) to the extent permitted by applicable law, accept any responsibility for the use or misuse of this Tool by any individual including, but not limited to, primary care providers or entity, including for any loss, damage or injury (including death) arising from or in connection with the use of this Tool, in whole or in part; or (iii) give or make any representation, warranty or endorsement of any external sources referenced in this Tool (whether specifically named or not) that are owned or operated by third parties, including any information or advice contained therein.**



Poverty: A Clinical Tool For Primary Care Providers is a product of the Centre for Effective Practice. Permission to use, copy, and distribute this material for all non-commercial and research purposes is granted, provided the above disclaimer, this paragraph and the following paragraphs, and appropriate citations appear in all copies, modifications, and distributions. Use of the Poverty: A Clinical Tool For Primary Care Providers for commercial purposes or any modifications of the tool are subject to charge and use must be negotiated with Centre for Effective Practice (Email: [info@effectivepractice.org](mailto:info@effectivepractice.org)).

**For statistical and bibliographic purposes, please notify the Centre for Effective Practice ([info@effectivepractice.org](mailto:info@effectivepractice.org)) of any use or reprinting of the tool. Please use the below citation when referencing the tool:**

Reprinted with Permission from Centre for Effective Practice (October 2016). Poverty: A Clinical Tool For Primary Care Providers (PEI). Toronto: Centre for Effective Practice.

Developed by:



Centre  
for Effective  
Practice

With support from:

THE COLLEGE OF  
FAMILY PHYSICIANS  
OF CANADA



LE COLLÈGE DES  
MÉDECINS DE FAMILLE  
DU CANADA

PRINCE EDWARD ISLAND  
COLLEGE OF  
FAMILY PHYSICIANS



LE COLLÈGE DES MÉDECINS  
DE FAMILLE DE  
L'ÎLE-DU-PRINCE-ÉDOUARD

A CHAPTER OF THE COLLEGE OF FAMILY PHYSICIANS OF CANADA  
UNE SECTION DU COLLÈGE DES MÉDECINS DE FAMILLE DU CANADA