

December 2024

20

**YEARS
OF
IMPACT**

cep.health



Centre
for Effective
Practice

20 Years of Impact



In 2004, the Centre for Effective Practice opened its doors with a simple mission: help primary care clinicians navigate an increasingly complex clinical environment.

We quickly became a trusted source of evidence-based, customized tools and supports that both respond to and anticipate the needs of primary care clinicians and the health system.

Through the strength of our partnerships and high-quality clinical solutions, we have established a solid track record of advancing health system priorities.

Our sincere thanks to the many partners who support and enhance CEP's work. We're excited to see what we can achieve together over the next twenty years in Ontario and across the country.

Dr. David Price
Board Chair

Lena Salach
CEO

20 Years of Impact Through Growth and Innovation

2004

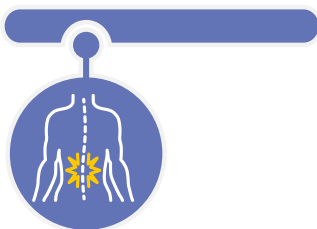


CEP is established

CEP launches in 2004.

Driving a sustainable health system

~\$1 million in costs avoided annually with CEP's CORE Low Back Pain tool.



Keeping patients healthy

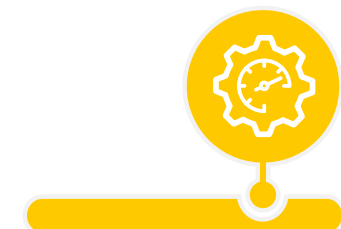
10 million+ patients benefit each year from CEP's wide spectrum of decision-support tools.

Delivering rapid, responsive solutions

170,000+ visitors to CEP's COVID-19 Resource Centre in 2020 to 2024.



For two decades, CEP has been helping primary care clinicians navigate an increasingly complex clinical environment. Our impact is built on responsive and innovative solutions that meet evolving system needs in Ontario and across the country.



Saving clinicians time

CEP's Academic Detailing Service saves clinicians 6 hours of education time with each tailored visit.

Linking sectors of care

12,000+ clinicians with access to standardized digital tools for primary and acute care through Evidence2Practice Ontario*.



Supporting whole-person care

CEP tools and supports have covered 200+ clinical topic areas since our launch.

Building the system's future

CEP is leading the development of recommendations to strengthen team-based primary care in Ontario, in collaboration with system partners and stakeholders.



2024

*Evidence2Practice Ontario is a program delivered by the Centre for Effective Practice, eHealth Centre of Excellence and North York General Hospital.